

# How to play chess?

## How to start

Start with the setup on the right

Light square in the lower right hand corner of each player

White moves first.



## Objective

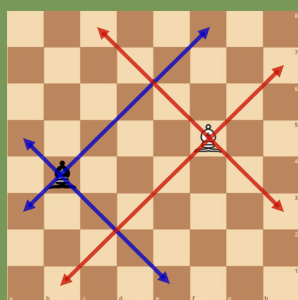
Deliver *checkmate*

## Rules

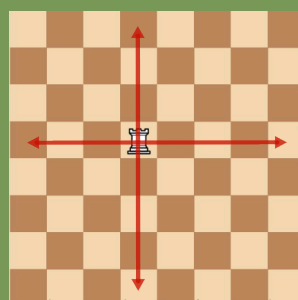
1. Players take turns making moves
2. May *capture* pieces of other side
3. *Attacking* piece is placed on square of captured piece.
4. Captured piece is taken off the board
5. Players cannot capture own pieces.



**Bishop**



Moves diagonally in any direction



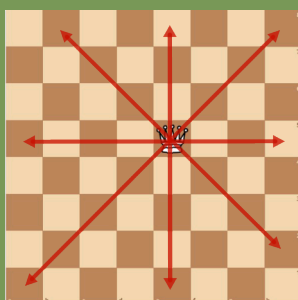
Moves horizontally & vertically in any direction



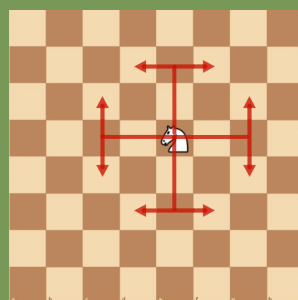
**Rook**



**Queen**



Moves in any direction in a straight line



Moves in an L-shape and jumps over pieces

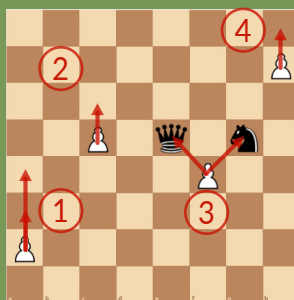


**Knight**



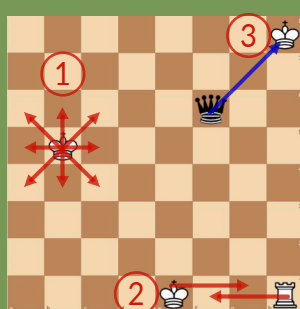
**Pawn**

1. On first move, can move forward 1 or 2 squares
2. Thereafter, only moves forward 1 square at a time



3. Captures 1 square to its diagonal (forward)
4. When on last rank, *promotes* to any piece except pawn or king

1. Moves 1 square in any direction
2. Can *castle* if nothing blocking king and rook and both have not moved



3. If attacked by opponents' piece, said to be in *check*. King must *move out of check*, *block checking piece*, or *capture checking piece* on next move or else it will be *checkmate*



**King**

